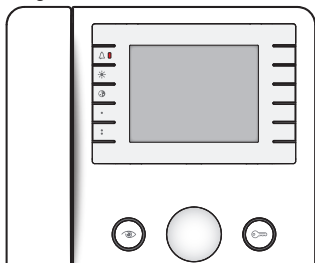




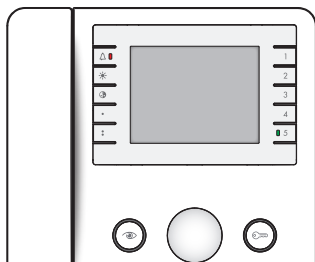
Video Entry System Internal Receiver

FB00850-EN

Agata V 200 - Agata VC 200



Agata VC/B 200




AGATA V 200 - AGATA VC 200 AGATA VC/B 200

USER MANUAL

Function of buttons


 Keep pressed down to adjust the ringtone volume: medium, high, off (red LED on)

 Keep pressed down to adjust the screen brightness.

 Keep pressed down to adjust the screen colour saturation.
In devices with black and white LCD the button adjusts the contrast.

● Auxiliary 1

●● Auxiliary 2

1÷5  Intercom 1...5
Green LED lit = line busy or auxiliary warning.

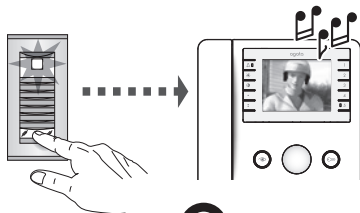
Activating video entry panel.

 Pressing the Auxiliary 1 (●) button repeatedly with active video signals present will cause all of the video entry panel video connections to be successively displayed.

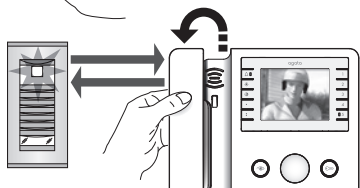
 Door lock release

Only use soft, dry or slightly damp cloths to clean the terminal; do not use any chemical products.

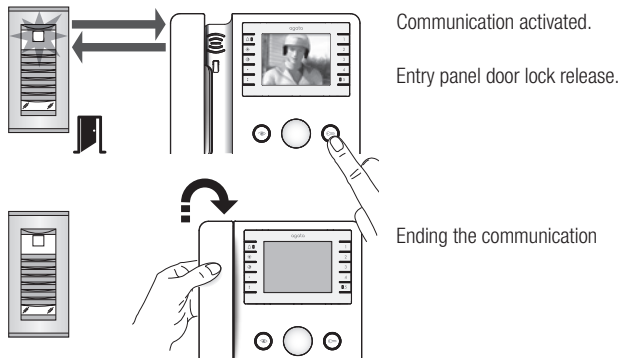
Basic functions (Agata V 200 - Agata VC 200 - Agata VC/B 200)



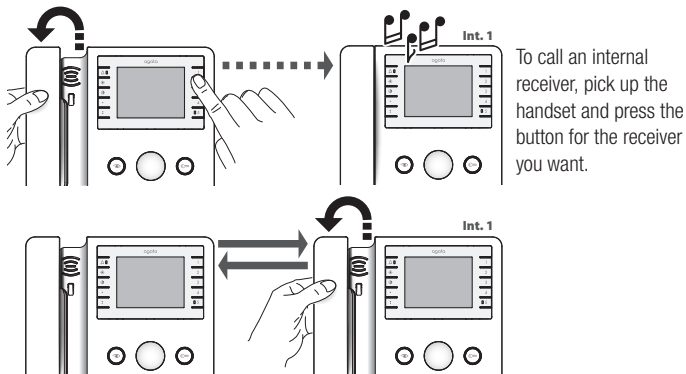
Call in progress.

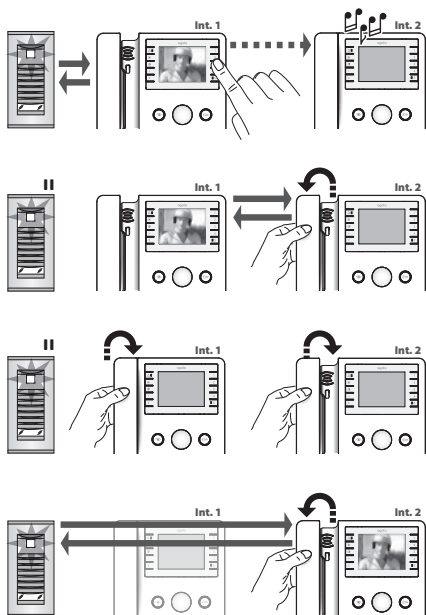


Answering a call.



Intercom (Agata V 200 - Agata VC 200 - Agata VC/B 200)





When an active call is open, select the internal receiver to which the call is to be transferred.

As soon as the internal receiver which has been called picks up the handset, the call is active between the two receivers; the entry panel remains on hold.

To connect internal receiver 2 with the entry panel, internal receiver 1 and subsequently internal receiver 2 must replace the handset and then internal receiver 2 must pick it up again.

Where the call is not successfully transferred, replace the handset and pick it up again to reactivate audio communication with the entry panel.

Decommissioning and disposal. Do not dispose of the packaging material and the device at the end of its life cycle in the environment, but dispose of them in compliance with the laws in effect in the country in which the product is being used. The recyclable components are marked with a symbol and the material's ID marker.

THESE INSTRUCTIONS MUST BE ATTACHED TO THE DEVICE, THE DATA AND INFORMATION CONTAINED ARE TO BE CONSIDERED AS SUBJECT TO CHANGE AT ANY TIME AND WITHOUT THE NEED FOR ANY ADVANCE WARNING.

CAME 

CAME S.P.A.

Via Martiri Della Libertà, 15
31030 Dosson di Casier - Treviso - Italy
tel. (+39) 0422 4940 - fax. (+39) 0422 4941

CAME.COM